



RUBĒROIDA KĀRTA 862.5 (vai 1100)

LOKSNES 1250x1150(VA) 1875x1150)

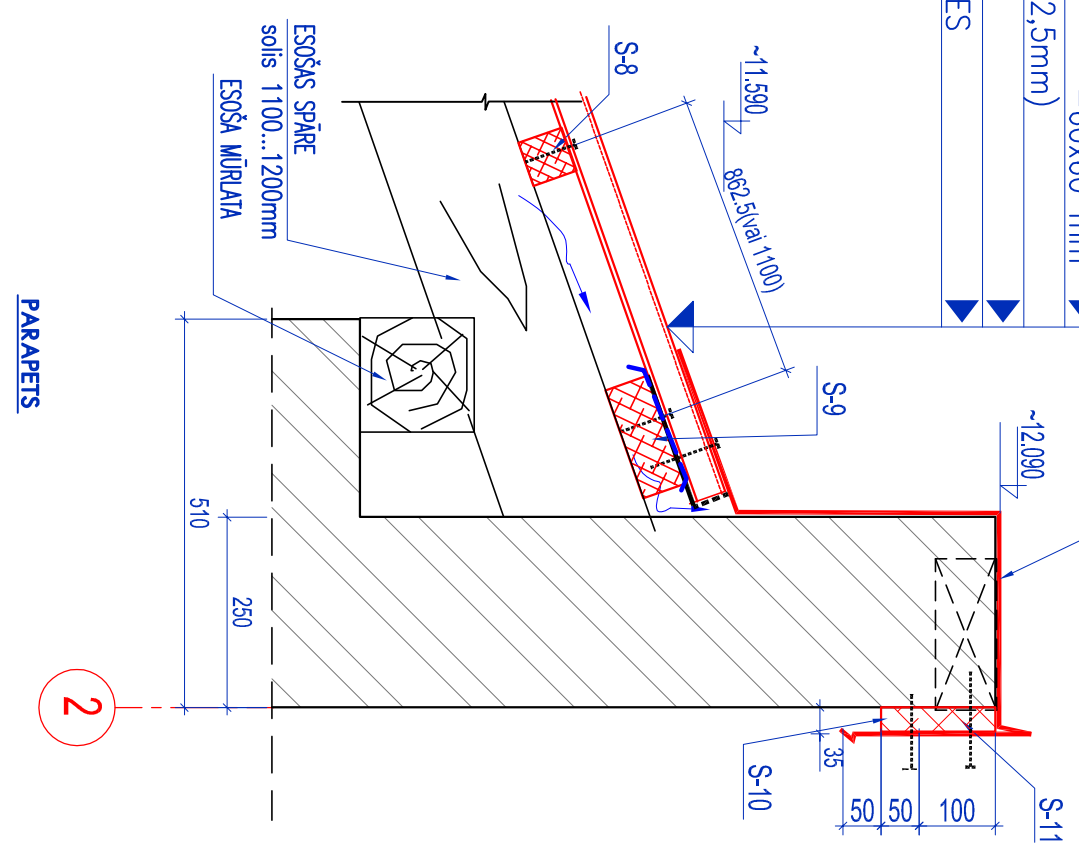
LATOJUMS -60x60 mm

(SOLIS 1100 VAI 862,5mm)

ESOŠAS KOKA SPĀRES

BK-4

(tumsī pelēka tonī)



2

BK-4

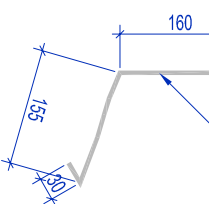
Technical drawing of a road cross-section. The road width is indicated as 150m. The shoulder width is indicated as 200...250m. The drawing shows a road with a wavy line representing a ditch or embankment on the left side.

Dibels solis -600 mm

60x60

RUBĒROIDA KĀRTA

b=0,6mm L=15.5



KOMUNĀLPROJEKTS

Daugavpils nodalja

BŪVKOMERSANTA

Amats

--	--

DD VANDT

I. BEINAROVIČA

BÜTEHNİKE

Arh. reg.Nr.

Buvobjekta nosaukums

EKAS FASADES APLICINAJUMA KARTE

DZĪVOJAMAS MAJAS SAULES ielā 17, DAUGAVPILĪ.

Lapas saturdays

GRIEZUMI 3-3,4-4. MEZGLS "3"

Pasūtījuma Nr.	16-31-005
----------------	-----------

Saskatchewan

[illegible]

AJUMA KARTE

17, DAUGA

Mērogs

1:100, 1:10, 1:20

Lapas Nr.

BK-6